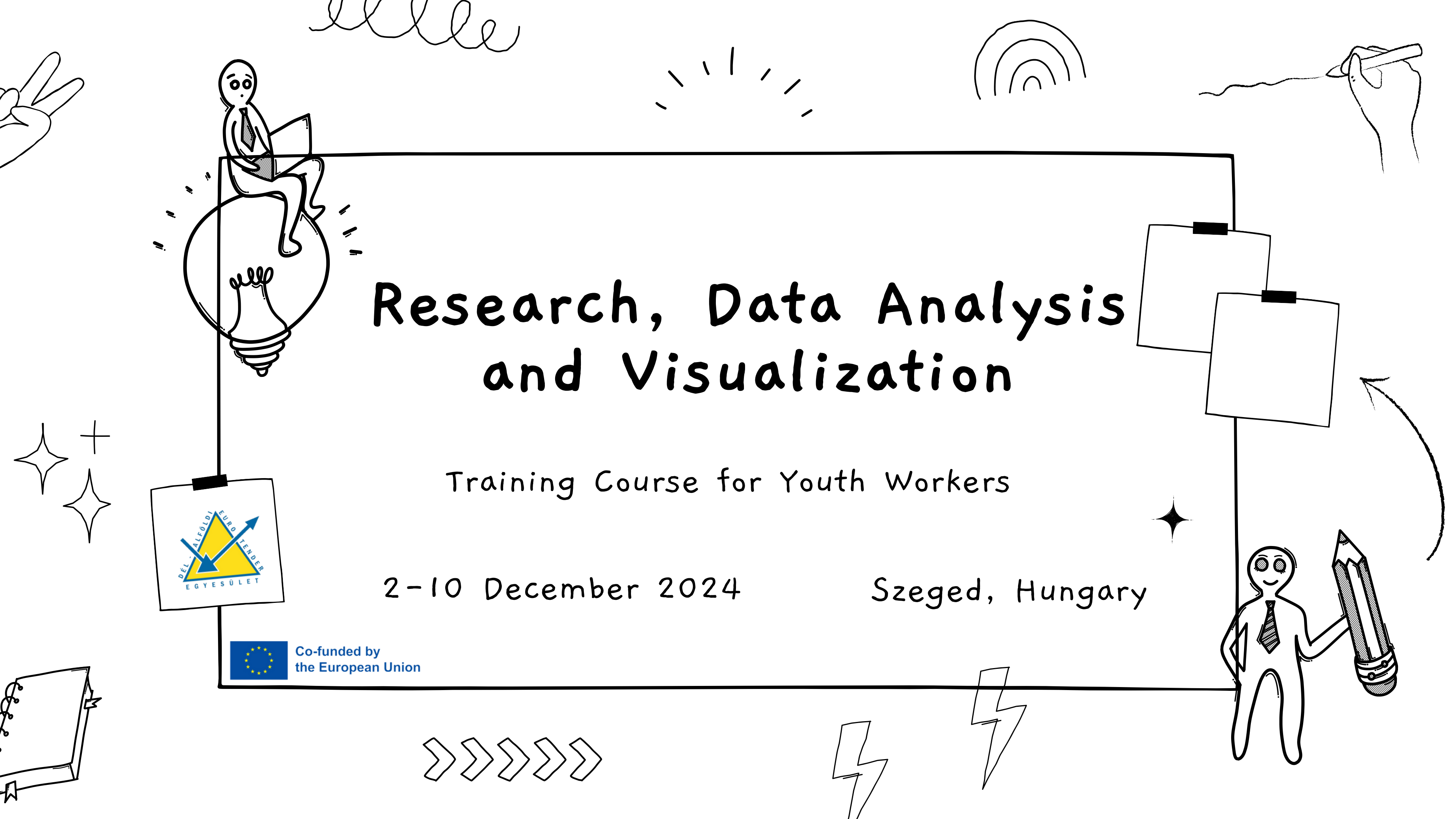
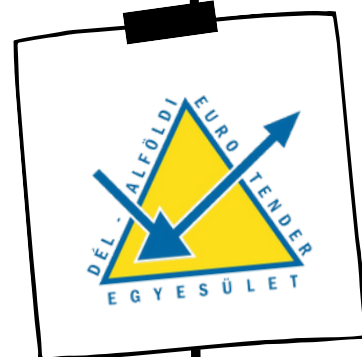


Research, Data Analysis and Visualization

Training Course for Youth Workers

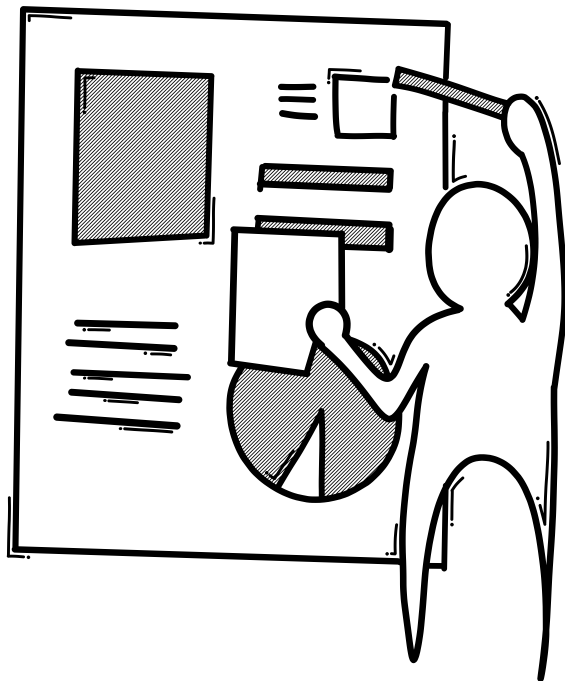
2-10 December 2024

Szeged, Hungary

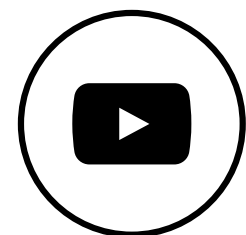
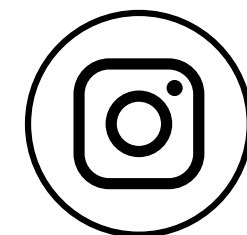
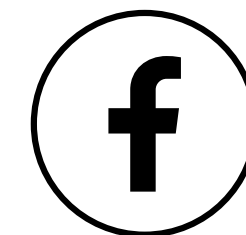
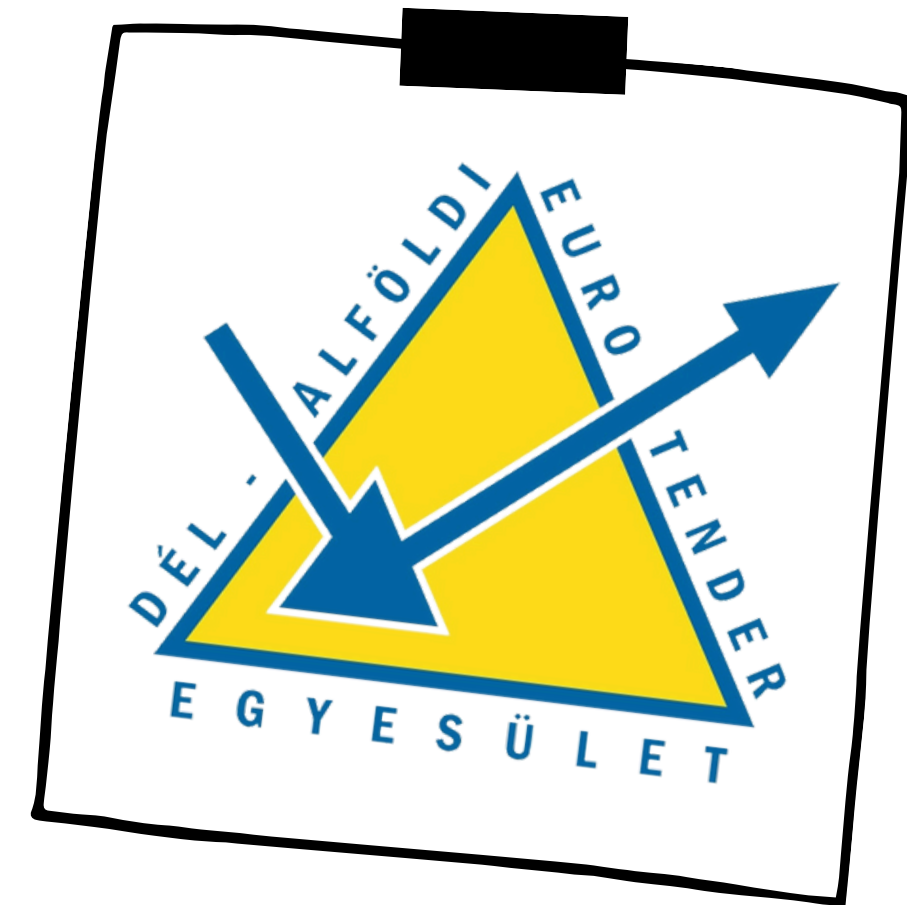
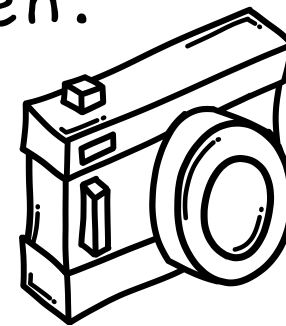


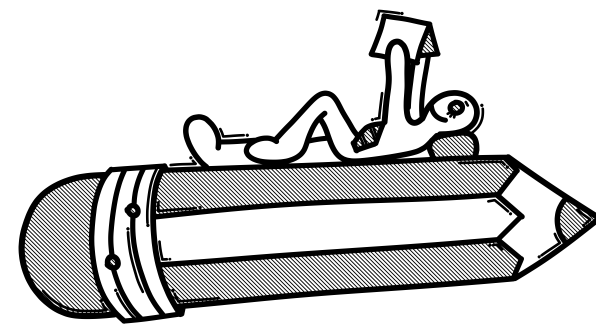
About us

Eurotender Association is a public benefit organization from Hungary. Our operations include the support of disadvantaged people in the region, primarily improving the conditions of ethnicities, youth, the elderly, and women.

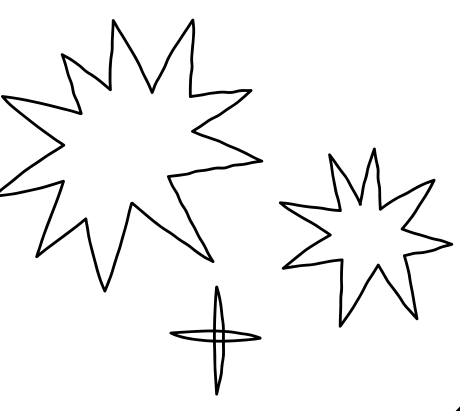


Contact with any questions:
Zsanett Függy
fugg.zsanett@gmail.com



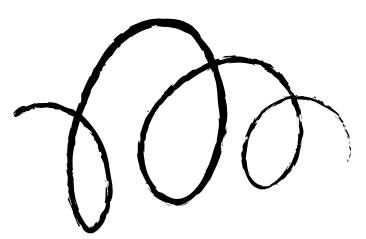


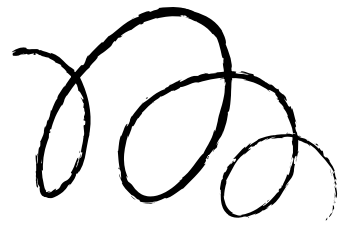
What to expect?



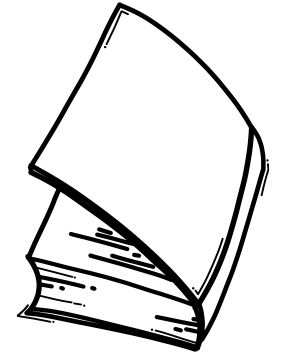
Expect to dive into an adventure where you'll explore your skills to gather, interpret, and present data. This includes understanding research methodologies, analyzing data patterns, and employing visualization tools to communicate findings in an understandable manner.

December 2	Arrival
December 3	Intro, Team Building
December 4	Types of Data, Data Collection
December 5	Data Interpretation
December 6	Data Visualization
December 7	Misleading Data, Storytelling (Intercultural Evening)
December 8	Group Projects
December 9	Wrap-up, Action Planning
December 10	Departure

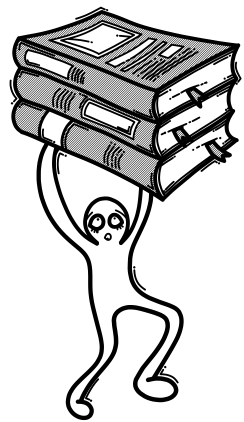




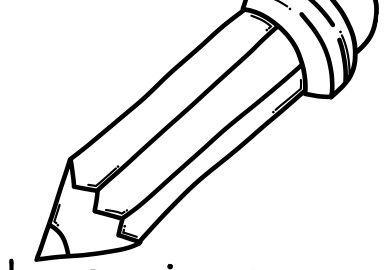
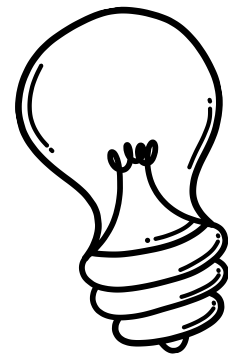
Here's what this adventure isn't:



- 1 It isn't a vacation package! While Hungary's beauty is captivating, organized tours aren't on our agenda. Feel free to explore on your own time before or after our project (if the organizers allow, you may arrive 1 day earlier and/or 1 day later to Hungary). Remember, extra travel and stay costs are on you.
- 2 Forget about formal classrooms and traditional teaching. Keep in mind that our workshops aren't led by teachers, but by experienced facilitators/trainers. We're here for a non-formal, hands-on experience, where learning is as dynamic as the ideas we explore. You'll be learning by doing and from each other in a fun and easy way!
- 3 Luxury hotels and "gourmet" meals aren't part of the plan. With the budget we have we're focused on essentials - comfortable accommodation, good food, project materials, and other key expenses. It's about making the most of what we have, not luxurious adventures.



Participants' profile

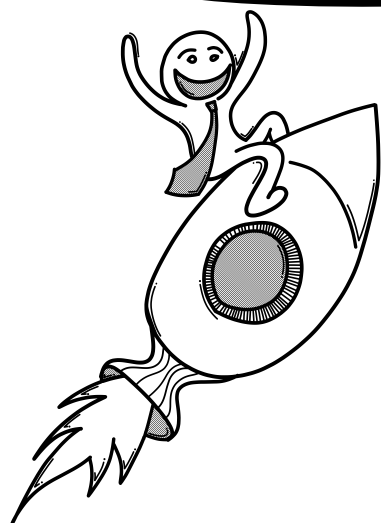


To apply, fill out the application form:

<https://forms.gle/KzFAp3PkjEkIrbE7>



APPLY NOW



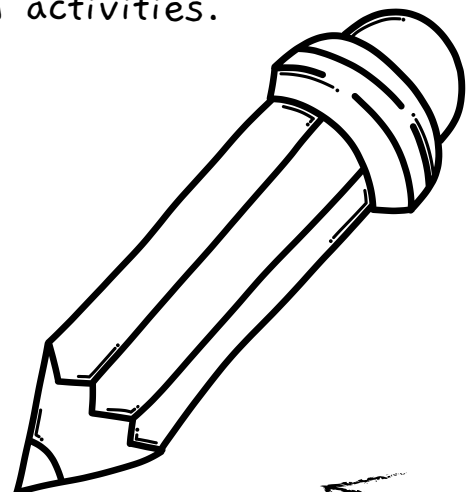
- 1 **Age:** You should be over 18 years old.
- 2 **Nationality/Residency:** You must be a citizen of or have residency in an Erasmus+ eligible country. (EU Member States or third countries associated to the Programme, see the list in the application form). Note, that you must have a sending organization from the country you travel from (please, indicate in your application if you represent an NGO, so you can have the chance to participate even in case we do not yet have a partner from that country.)
- 3 **Interest:** You should have a keen interest in the topic of the training course and have a wish to develop professionally and personally.
- 4 **Background:** No specific academic or professional background is required, but you should be currently involved in working with young people (in any format) or express a serious commitment to get involved in the future.
- 5 **Talking & Listening:** You must be able to communicate in English.
- 6 **Being There:** You're ready to join us for all the project days and do all the activities (including dissemination and follow-up activities).
- 7 **Learning from Others:** You're eager to engage in non-formal educational settings, collaborate with peers, and be open to diverse viewpoints.
- 8 **Sustainable transport:** You should be willing to travel by bus/train to the training course.

Your responsibilities after the training

Travel reimbursement will only be made by bank transfer and based on real costs. We will make one transfer per country, which can be sent either to the account of the partner organization or the account of one appointed participant per country.

The bank transfer will be executed up to the limit per person after:

- providing all of the original travel documents,
- filling out the European Commission's online evaluation ("participant report")
- sharing visibility and dissemination activities.



Tickets

Sending travel documents: We must receive all tickets and invoices to reimburse them. Digital tickets must be sent via email, "physical" tickets must arrive via recommended post, within 20 days, post-activity.

Participant Report

Reflecting and evaluating: You should reflect and evaluate your learning process during the training course and how you will apply it in your personal and professional life. This includes filling up your Youthpass Certificates and the official evaluation survey of the program.

Your participation in this project is a commitment and the activities outlined on this page are mandatory. These activities must be completed in a maximum of 20 days from the end date of the training course.

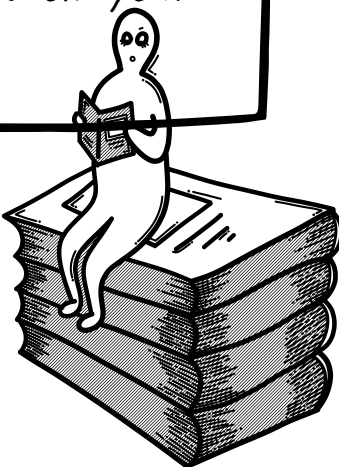
Please note that the reimbursement of your travel costs will only be done if you have completed all these tasks in time.

Visibility

Sharing your learnings and experiences: Share a public post about the project on your personal (but public) social media platforms. Include photos, your testimonial, and tag our page to spread the word about our program's goals and your personal experiences. And of course, share our outcomes!

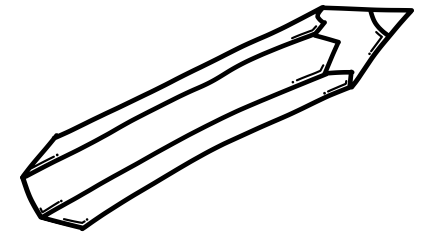
Dissemination

Becoming an ambassador: Organize a local (in-person) event to share your experiences from the training course with peers and community members. This event could be a small gathering, a workshop, or a presentation, but it should engage at least 15 participants. Use this opportunity to inspire others to participate in Erasmus+ projects and to think of the societal challenges we are facing today. Share information about this event with some photos of it in a public post on your social media platforms.



elle

Travel Arrangements

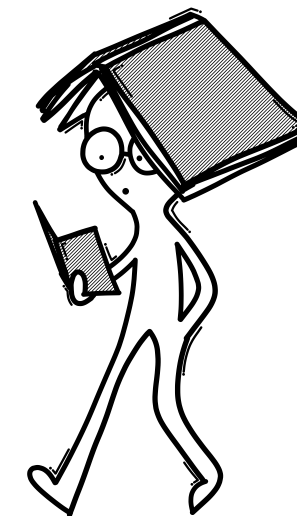


Travel costs will be reimbursed in line with Erasmus+ Programme rules and the European distance calculator

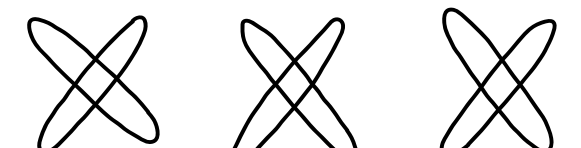
Travel distance	Green travel*	Non-Green travel
10 - 99 km	56 EUR	28 EUR
100 - 499 km	285 EUR	211 EUR
500 - 1999 km	417 EUR	309 EUR
2000 - km	535 EUR	395 EUR

NOTE: Procuring medical insurance valid during your stay in Hungary is your own responsibility. EU citizens are entitled to have a European Health Insurance Card (EHIC) which you can get for free from your health authorities and you can use in Hungary and any other EU country as well.

Anyway, you can also choose private insurance for the duration of your stay at your own expense. You have the freedom to choose any health insurance provider that suits your needs, but having health insurance for the duration of the training course is **mandatory**.



*in line with the priorities set within the Erasmus+ Programme guide for 2021 - 2027. Green travel is defined as travel that uses low-emissions means of transport such as bus or train. Therefore, unless it is impossible (e.g. traveling from over 1000km), participants should travel by BUS or TRAIN.



1 The **arrival day** is the 2nd of December and the **departure day** is the 10th of December. You are expected to arrive in Szeged and check in at the hotel on the 2nd of December and leave on the 10th of December (check out at the hotel by 10:00).

2 Only after your participation is confirmed by us, look for suitable tickets and send them to us for approval to fugg.zsanett@gmail.com (clear screenshots of which the exact route, date, times and final price are visible). Don't buy any tickets without confirmation from us. Tickets purchased without confirmation will not be reimbursed.

3 Remember that the project is NOT about tourism. Only **uninterrupted travel** expenses incurred within 1 day before the activity start date and/or 1 day after the activity end date can be accepted for reimbursement if you find tickets for the same or lower value than those on the actual travel dates and you get confirmation from us. If you decide to arrive earlier or stay longer (**maximum 1 day before and/or 1 day after the project**), all costs related to that shall be covered by yourself, including food and accommodation for those days.

4 You need to make sure your journey is planned wisely and in an **economical and sustainable** way. Since the project is financed with public money you are not allowed to travel in first class, use a taxi, or purchase additional services, such as extra legroom or special seating etc. Participants will be reimbursed on the basis of the **least expensive and greenest route** (green=bus or train).

5 Travel agency fee charges (online or offline!) are also not reimbursed. Tickets should be purchased directly through the service-providing companies' websites (i.e. flight tickets through the airlines' websites, train tickets through the railways' websites)

6 Attending all the activities/sessions during the training course is mandatory and except for illnesses or other well-justified situations, you are expected to **participate FULLY in all activities**.

7 The participants must be also involved in the activities of **dissemination and follow-up** of the project. For this, they must submit proof (links of public posts) via email within 20 days after the project. In the situation where the responsibilities won't be accomplished in time, participants should be aware that the travel reimbursement will be treated as a voluntary contribution to the project.

8 **Missing or lost tickets** will not be reimbursed. **PDF boarding passes** for all parts of air travel are essential for reimbursement. Only **original travel documents** will be considered for reimbursement. **Electronic tickets** are preferable! If you use any physical tickets during your journey, we can only reimburse them if we get them from you physically - a picture is not enough, you need to give them to us in person or send them by post after the training course. Please note, that no scanned document will be reimbursed if the original hard copy is not provided as well. Similarly, screenshots of boarding passes are not enough, the original PDF boarding pass is required for reimbursement. **Digital and physical copies of these documents must be received by the organizers within a maximum of 20 days, post-activity.**

The venue

The city

The training will take place in Szeged. The city is located in the South-Eastern part of Hungary, by the river Tisza. Szeged is known as the City of Sunshine and is the third largest city in Hungary.



The hotel

The accommodation for the participants will be in gender-based rooms with 3 separate beds and bathrooms at Riva Hotel. Further help on how to reach the venue will be sent to selected applicants.

The training venue where most of the activities will take place will be at a comfortable walking distance from the hotel.



The food

Breakfast, lunch and dinner will be provided in the restaurant under the hotel for all participants.

Your accommodation and food during the training course are covered by the Erasmus+ programme and therefore free for you, as long as you participate in the daily program of the training course.

